

# Mapperley

## Area Committee

## Executive Summery

Unofficial june2013 Data

# Ward Priorities

Theme	Priorities	Key Actions	Outcome	Lead
<b>Safer</b>	Autocrime – car breakins	Continued police patrols	Reduction in crime stats	Police
	Prostitution	PTF to continue patrols. CCTV monitoring	Reduction in number of reports	Prostitution Task Force
	ASB Wells Road	Police patrols. CCTV	Reduction in incidents	Police
	Burglaries	Police patrols. Property owners to secure premises.	Reduction in numbers	Police
<b>Neighbourhoods</b>	Clean Neighbourhoods/ Environmental and neighbourhood appearance	Report incidences to City Services. Monthly Ward Walks CPS patrols	Identify issues CPS and housing providers work together to identify premises where bins are left on street and enforce untidy gardens	City Services Councillors Community Protection SL Team Landlords
<b>Families</b>	Play & Youth provision	Mapping of current provision	Identify gaps in service provision	F&CT
	Family activities	Develop family orientated events and activities	Family and community cohesion	NAT Local groups Councillors

# Community Engagement

## Ward Walks

Area/Estate	Date/Time	Meeting Point
Area to be decided	16 <sup>th</sup> September 2013	4.00pm – venue to be decided

## Community Meetings

Group	Date	Venue
Local Forum	11 <sup>th</sup> September 2013 - 7.30pm	St Andrews church Hall
Local Forum	12 <sup>th</sup> November 2013 - 7.00pm	Wells Road Community Centre
Local Forum	20 <sup>th</sup> January 2013	St Judes church Hall

# Community Engagement

## Events Delivered

Event	Lead Partners	Date/Time	Venue
Coppice park event party in the park	Friends of Coppice Park EPIC Locality Management and other partners	12-6pm 9 <sup>th</sup> August	Coppice park
Holding hand round St Anns	Stanra Renewal Trust Locality Management local churches	12-7 13 <sup>th</sup> July	The Chase St Anns
Consultation on development at Kingsthorpe	Housing Strategy	27 <sup>th</sup> August	Community centre St Anns wells road

## Future Events and Activities Planned

Event	Lead Partners	Date/Time	Venue
St Anns Got Talent final	Children and Families Locality management CRS Metropolitan Housing Renewal Trust	Monday 21 <sup>st</sup> October	St Judes Church Hall
Sycamore & Coppice Park Volunteering Sessions	Emma Dewinton & John Simpson	21 <sup>st</sup> September -10 -12pm 19 <sup>th</sup> October – 10-12pm 23 <sup>rd</sup> November – 10-12pm 18 <sup>th</sup> January – 10 – 12pm 16 <sup>th</sup> February – 10 – 12pm 22 <sup>nd</sup> March – 10- 12pm	Coppice Park Sycamore Park Coppice Park Sycamore Park Coppice Park Sycamore Park

# Finance

## **Ward Councillor Budgets**

Total Amount allocated this period £6,666

Budget Remaining Unallocated £ 8540 (inc of 2012-13 allocation)

## **Area Capital Fund**

Total Amount allocated this period £7500 LTP

£23,353 general

Budget Remaining Unallocated £169.280 (inc of 2012-13 allocation)

## **Others – Section 106, NCH Environmentals, Other Funding**

None this period

# Ward Summary

## Ward Performance Snapshot

Mapperley						
Area	Jun-13 Volume	Jun-12 Volume	Direction of Travel	YTD 13/14 Volume	YTD 12/13 Volume	Direction of Travel
Crime	106	125	↓	312	300	↑
ASB	69	55	↑	152	177	↓
DV	8	10	↓	27	28	↓
Area	May-13 Volume/ Score	May-12 Volume/ Score	Direction of Travel	YTD 13/14 Volume/ Average Score	YTD 12/13 Volume/ Average Score	Direction of Travel
Cleanliness	77	87	↓	85	82.5	↑
Graffiti	17	27	↓	55	35	↑
Fly tipping	49	40	↑	102	79	↑
Deliberate Fires	1	3	↓	5	3	↑

### Key

↑	Most recent data shows an <b>increase</b> compared to the corresponding period last year.
↓	Most recent data shows a <b>reduction</b> compared to the corresponding period last year.
↔	Most recent data shows <b>no change</b> compared to the corresponding period last year.

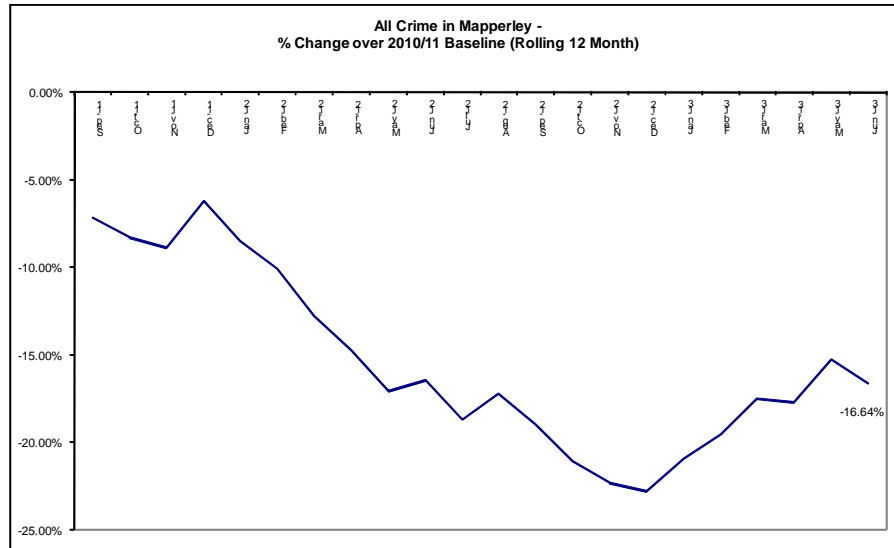
## Ward NAT Meetings

Date	Time	Venue
11.07.13	2:00pm - 3:30pm	St Ann's Valley Centre
08.08.13		
12.09.13		
10.10.13		
14.11.13		
12.12.13		

## Ward NAT Attendees

NAT Members (TORs i.e Nom, Ndo, CP Team Leader etc, etc)	
Name of Officer	Email Address
Fi Cusick (NCC, NDO)	<a href="mailto:fi.cusick@nottinghamcity.gov.uk">fi.cusick@nottinghamcity.gov.uk</a>
Mick Egan (NCH HPM)	<a href="mailto:michael.egan@nottinghamcityhomes.org.uk">michael.egan@nottinghamcityhomes.org.uk</a>
PCSO9573 Dawn Merritt (PTF)	<a href="mailto:dawn.merritt@nottinghamshire.pnn.police.uk">dawn.merritt@nottinghamshire.pnn.police.uk</a>
PCSO Miri Piliero (PTF)	<a href="mailto:domenica.piliero@nottinghamshire.pnn.police.uk">domenica.piliero@nottinghamshire.pnn.police.uk</a>
Mick Davis (NCC FCT)	<a href="mailto:michael.davis@nottinghamcity.gov.uk">michael.davis@nottinghamcity.gov.uk</a>
Kathleen Thomas (NCC FCT)	<a href="mailto:kathleen.thomas@nottinghamcity.gov.uk">kathleen.thomas@nottinghamcity.gov.uk</a>
Jack Donnelly (Metropolitan - MHT)	<a href="mailto:jack.donnelly@metropolitan.org.uk">jack.donnelly@metropolitan.org.uk</a>
CPTL Lee-ann Mullan (CPS)	<a href="mailto:lee-ann.mullan5853@nottinghamshire.pnn.police.uk">lee-ann.mullan5853@nottinghamshire.pnn.police.uk</a>
PS Steve Cook (NPT)	<a href="mailto:stephen.cook@nottinghamshire.pnn.police.uk">stephen.cook@nottinghamshire.pnn.police.uk</a>
Martine Hesketh (RT)	<a href="mailto:martine@renewaltrust.org.uk">martine@renewaltrust.org.uk</a>
PS Neil Radford (PTF)	<a href="mailto:neil.radford@nottinghamshire.pnn.police.uk">neil.radford@nottinghamshire.pnn.police.uk</a>
Kevin Bond (CCTV)	<a href="mailto:kevin.bond@nottinghamcity.gov.uk">kevin.bond@nottinghamcity.gov.uk</a>
Paul Dodsley (NHS)	<a href="mailto:paul.dodsley@nottinghamcity.nhs.uk">paul.dodsley@nottinghamcity.nhs.uk</a>
Paul Hall (RT)	<a href="mailto:paul@renewaltrust.org.uk">paul@renewaltrust.org.uk</a>
Helen Davis (EPIC)	<a href="mailto:helen.davis@nottinghamcity.gov.uk">helen.davis@nottinghamcity.gov.uk</a>
Cllr Emma Dewinton	<a href="mailto:emma.dewinton@nottinghamcity.gov.uk">emma.dewinton@nottinghamcity.gov.uk</a>
Cllr Rosemary Healy	<a href="mailto:rosemary.healy@nottinghamcity.gov.uk">rosemary.healy@nottinghamcity.gov.uk</a>
Cllr Thulani Molife	<a href="mailto:thulani.molife@nottinghamcity.gov.uk">thulani.molife@nottinghamcity.gov.uk</a>

# Crime



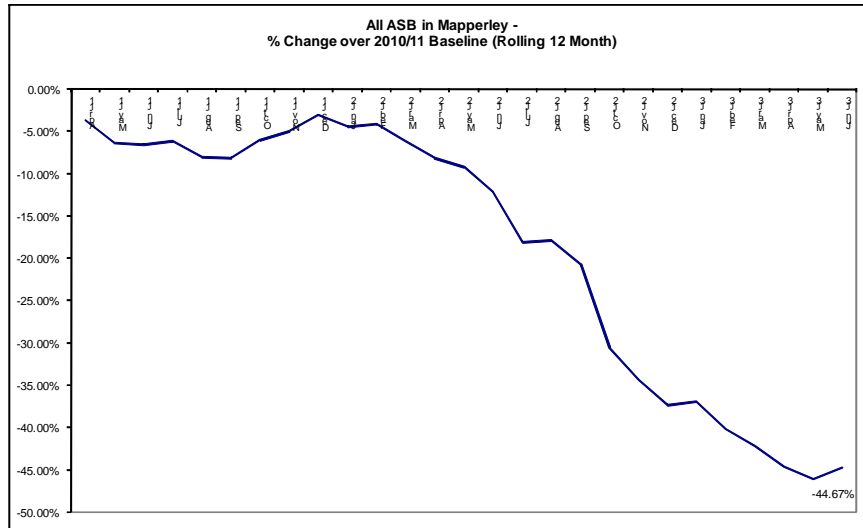
Red*		
Amber		
Green	19 less Crimes	-15.20%

\*Refers to June 2013 compared to June 2012

- The above baseline graph compares the *rolling* 12 month total of crime in Mapperley to a *fixed* 12 month 2010/11 baseline. The current 12 month total is showing a reduction of -16.64% against the baseline.
- In June 2013 there were 106 crimes which is a reduction of -15.20% (19 crimes, see above RAG rating) compared to June 2012. The Division as a whole experienced an increase in all crime of *approximately* +6.4%.
- Year to date crime in the ward has increased by +4% (12 crimes, April – June 2013 compared to April – June 2012, see Table 1 of page 5). In the Division as a whole, all crime is up by *approximately* +6.2%.
- The largest volume increase this month was in damage, which was up 9 crimes (+100%, see Table 1 of page 5).
- Crimes with a domestic flag assigned to them were down by 2 crimes (June 2013 compared to June 2012, see Table 2 of page 5). For June 2013 the ward ranked 12<sup>th</sup> for this type of crime out of the 20 wards in the Division.
- The rate (per 1000 of population) of all crime in Mapperley is better than the average rate for the 20 wards (figures are year to date, see Table 3 of page 6).



# All ASB



Red*	14 more incidents	25.45%
Amber		
Green		

\*Refers to June 2013 compared to June 2012

- The above baseline graph compares the *rolling* 12 month total of ASB in Mapperley to a *fixed* 12 month 2010/11 baseline. The most recent 12 month total is showing a reduction of 44.67% against the baseline, although there is a slight upturn.
- In June 2013 there were 69 ASB calls in the ward. This is an increase of 25.45% (14 calls, see above right RAG rating) compared to June 2012. The Division as a whole experienced a reduction of *approximately* -19% on this measure.
- Year to date ASB in the ward has reduced by -14.12% (25 calls, April – June 2013 compared to April – June 2012, see Table 5 of page 7). In the Division as a whole, ASB is down by *approximately* -25%.
- The rate (per 1000 of population) of ASB in Mapperley is slightly worse than the average rate for the 20 wards (June 2013 figures, see Table 4 of page 7).



# Crime Figures

Table 1: Crime Types by Month and Year to Date

Type	Jun-12	Jun-13	Change	% Change	Prev YTD	YTD	Change	% Change
Autocrime	13	13	0	0.00%	44	32	-12	-27.27%
Burglary	3	8	5	166.67%	10	28	18	180.00%
Burglary Other	6	7	1	16.67%	28	23	-5	-17.86%
Damage	9	18	9	100.00%	30	50	20	66.67%
Drugs	5	3	-2	-40.00%	19	18	-1	-5.26%
Fraud	3	4	1	33.33%	9	11	2	22.22%
Other	8	3	-5	-62.50%	13	7	-6	-46.15%
Personal Robbery	2	2	0	0.00%	5	3	-2	-40.00%
Robbery Business	1		-1	-100.00%	1		-1	-100.00%
Sexual	21	11	-10	-47.62%	23	20	-3	-13.04%
Theft	16	19	3	18.75%	52	63	11	21.15%
Theft from Person	2		-2	-100.00%	3		-3	-100.00%
Threats	2	1	-1	-50.00%	2	4	2	100.00%
Violence	34	17	-17	-50.00%	61	53	-8	-13.11%
<b>Grand Total</b>	<b>125</b>	<b>106</b>	<b>-19</b>	<b>-15.20%</b>	<b>300</b>	<b>312</b>	<b>12</b>	<b>4.00%</b>

Table 2: Crimes with a Domestic Flag Assigned to them by Month

Ward	Jun-12	Jul-12	Aug-12	Sep-12	Oct-12	Nov-12	Dec-12	Jan-13	Feb-13	Mar-13	Apr-13	May-13	Jun-13	Ward Rank (Jun-13)
MAPPERLEY	10	13	8	8	7	8	3	6	8	12	13	6	8	12

# Crime Figures

Table 3: Crime Types by Rate (per 1000 of population) of the 20 Wards – Figures are Year to Date 2013/14

WARD	ALL CRIME	AUTOCRIME	BURGLARY	DAMAGE	PERSONAL ROBBERY	THEFT	THEFT FROM PERSON	VIOLENCE
ARBORETUM	34.10	2.33	4.49	3.95	2.42	6.19	0.63	6.19
ASPLEY	23.27	1.65	1.70	3.69	0.28	3.40	0.17	6.70
BASFORD	17.46	2.41	1.60	3.02	0.19	3.33	0.06	4.07
BERRIDGE	22.14	2.68	1.82	3.16	0.32	5.42	0.59	4.45
BESTWOOD	16.65	1.07	1.31	4.18	0.30	1.97	0.12	4.30
BILBOROUGH	20.13	2.08	1.91	3.69	0.30	2.86	0.00	4.76
BRIDGE	21.94	1.44	0.92	2.15	0.10	8.61	0.51	4.31
BULWELL	26.37	1.86	1.30	5.08	0.68	6.81	0.37	5.20
BULWELL FOREST	18.66	1.32	1.18	2.94	0.73	6.02	0.15	3.31
CLIFTON NORTH	14.59	1.63	1.16	3.49	0.39	2.41	0.08	2.79
CLIFTON SOUTH	14.12	0.79	1.51	2.37	0.22	2.94	0.07	4.09
DALES	19.87	1.40	1.21	3.95	0.18	4.68	0.43	3.77
DUNKIRK & LENTON	26.10	4.85	4.03	2.75	0.37	6.32	0.46	2.84
LEEN VALLEY	18.87	0.65	1.96	3.55	0.37	5.14	0.19	3.64
MAPPERLEY	19.69	2.02	1.77	3.16	0.19	3.98	0.00	3.34
RADFORD & PARK	21.74	3.01	2.76	1.74	0.87	6.23	0.41	2.86
SHERWOOD	22.45	1.82	1.62	1.95	0.71	9.41	0.06	3.57
ST ANNS	22.98	2.15	1.29	3.94	1.58	2.15	0.36	6.01
WOLLATON EAST & LENTON ABBEY	12.76	1.00	1.41	1.41	0.00	4.82	0.00	1.41
WOLLATON WEST	12.21	1.42	1.56	1.63	0.00	3.60	0.20	1.29
<b>WARD AVERAGE</b>	<b>20.30</b>	<b>1.88</b>	<b>1.83</b>	<b>3.09</b>	<b>0.51</b>	<b>4.81</b>	<b>0.24</b>	<b>3.94</b>

	Highest Rate
	Second Highest Rate
	Third Highest Rate

# All ASB Figures

Table 4: All ASB by Rate (per 1000 of population) of the 20 Wards (Figures are June 2013)

WARD	RATE (PER 1000 OF POP.) June 2013
ARBORETUM	6.73
ASPLEY	4.31
BASFORD	3.46
BERRIDGE	4.29
BESTWOOD	3.58
BILBOROUGH	4.11
BRIDGE	5.74
BULWELL	5.57
BULWELL FOREST	3.75
CLIFTON NORTH	3.26
CLIFTON SOUTH	3.15
DALES	4.31
DUNKIRK & LENTON	3.66
LEEN VALLEY	2.34
MAPPERLEY	4.35
RADFORD & PARK	4.08
SHERWOOD	2.92
ST ANNS	6.80
WOLLATON EAST & LENTON ABBEY	1.00
WOLLATON WEST	1.02
<b>WARD AVERAGE</b>	<b>3.92</b>

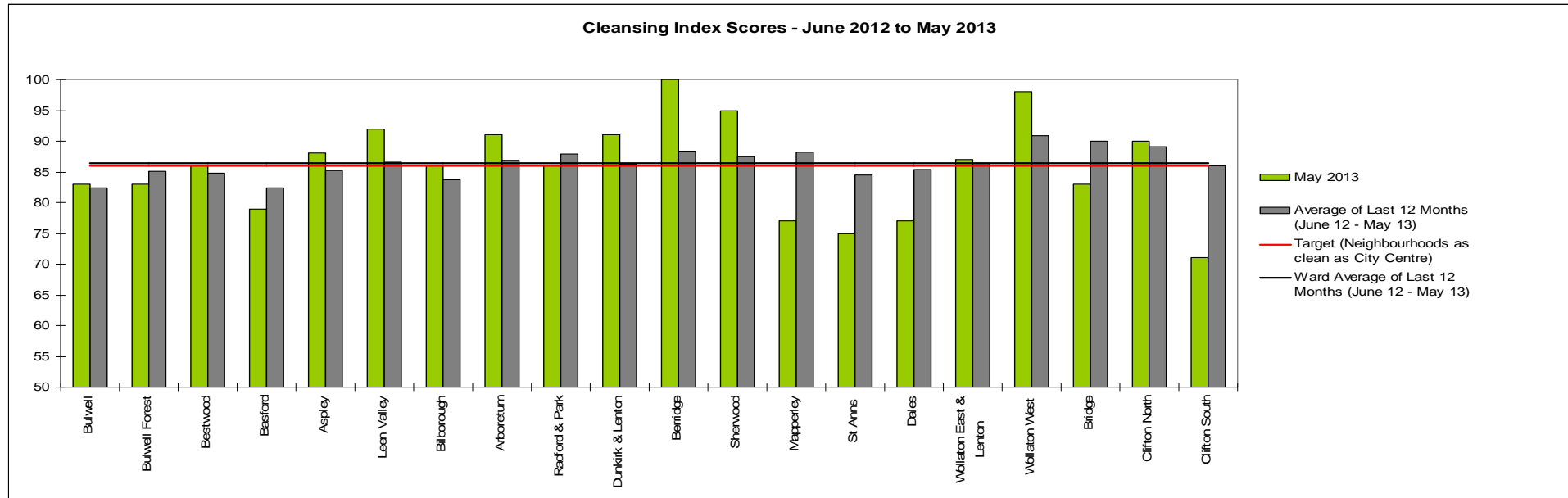
	Highest Rate
	Second Highest Rate
	Third Highest Rate

Table 5: All ASB by Month and Year to Date

	Jun-12	Jun-13	Change	% Change	Prev YTD	YTD	Change	% Change
All ASB Total	55	69	14	25.45%	177	152	-25	-14.12%

# Cleanliness Index

This graph shows the position of your ward compared to other Wards



**The “neighbourhood as clean as the city centre” benchmark target on cleanliness is to achieve a score of 86% in every ward. The 86% target is shown in red in the above graph.**

To calculate the Cleanliness Index (CI) an agreed number of transects are surveyed across an area covering a range of land types. Each site surveyed is awarded a cleanliness grade based on a 7 point scale from A to D where Grade A: – no litter, and Grade D: - heavily littered. The maximum possible score of 100 is achieved when all sites achieve Grade A.

The Code of Practice for Litter and Refuse (COPLAR) requires councils to strive to reach an ‘acceptable’ standard of cleanliness (grade B or better) across the Council area. Grade A is the ultimate goal and is how a site should be immediately after sweeping but is almost impossible to maintain for any length of time. For example, a grade A site is completely free of litter – one cigarette butt takes it down to B+.

To achieve the manifesto commitment of Neighbourhoods as clean as the City Centre a target of 86 is required as that was the CI for the City Centre in May 2011. To give some context if all areas surveyed achieved a grade ‘B’ standard, this would equate to a cleanliness index of 67.

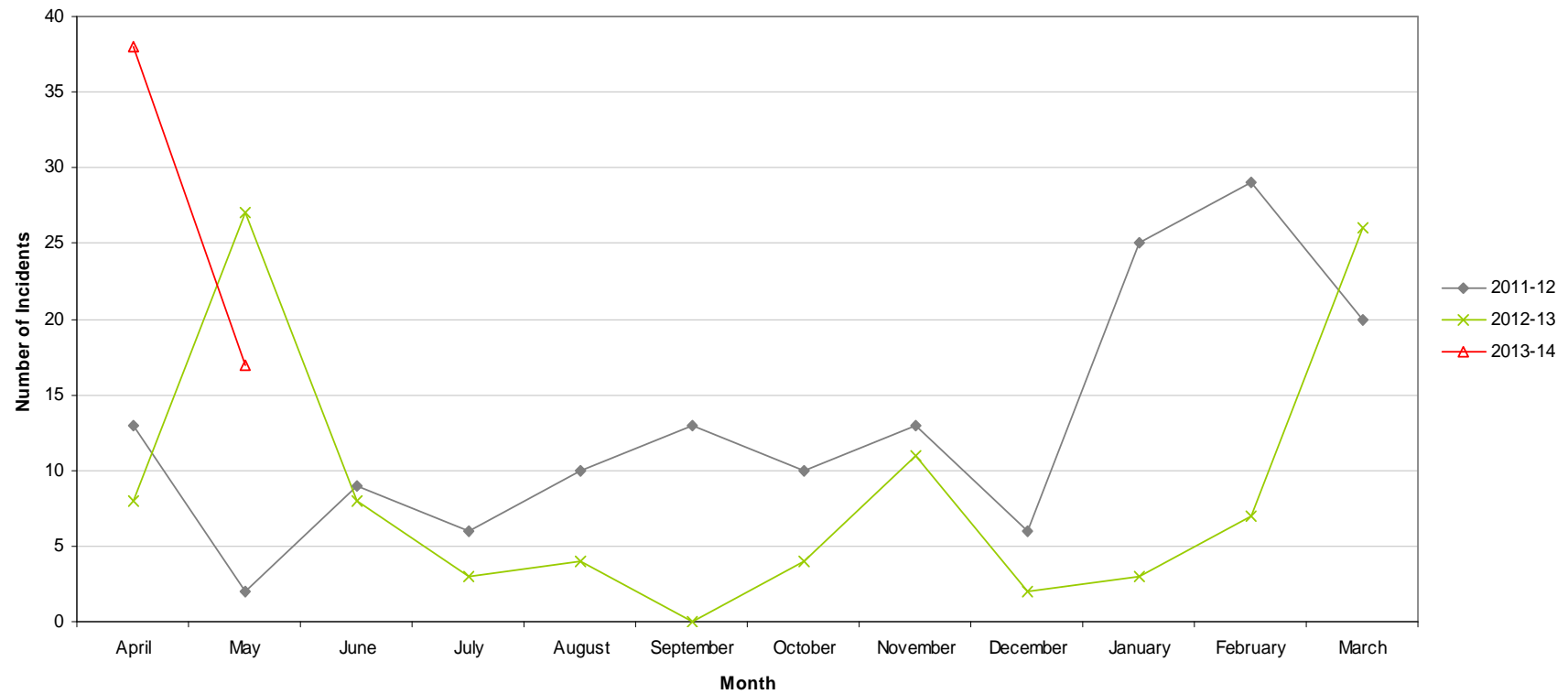
Cleanliness Figures provided by Neil Flaherty – Neighbourhood Services Directorate

# Graffiti Reports

<b>RED</b>		
<b>AMBER</b>		
<b>GREEN</b>	<b>17 incidents</b>	<b>Decrease of 10</b>

- All data refers to a comparison with the previous year's month
- It is proposed that performance over time graphs be used for each indicator
- Historic data for comparison is not available for dog fouling

Incidents of Graffiti - Mapperley

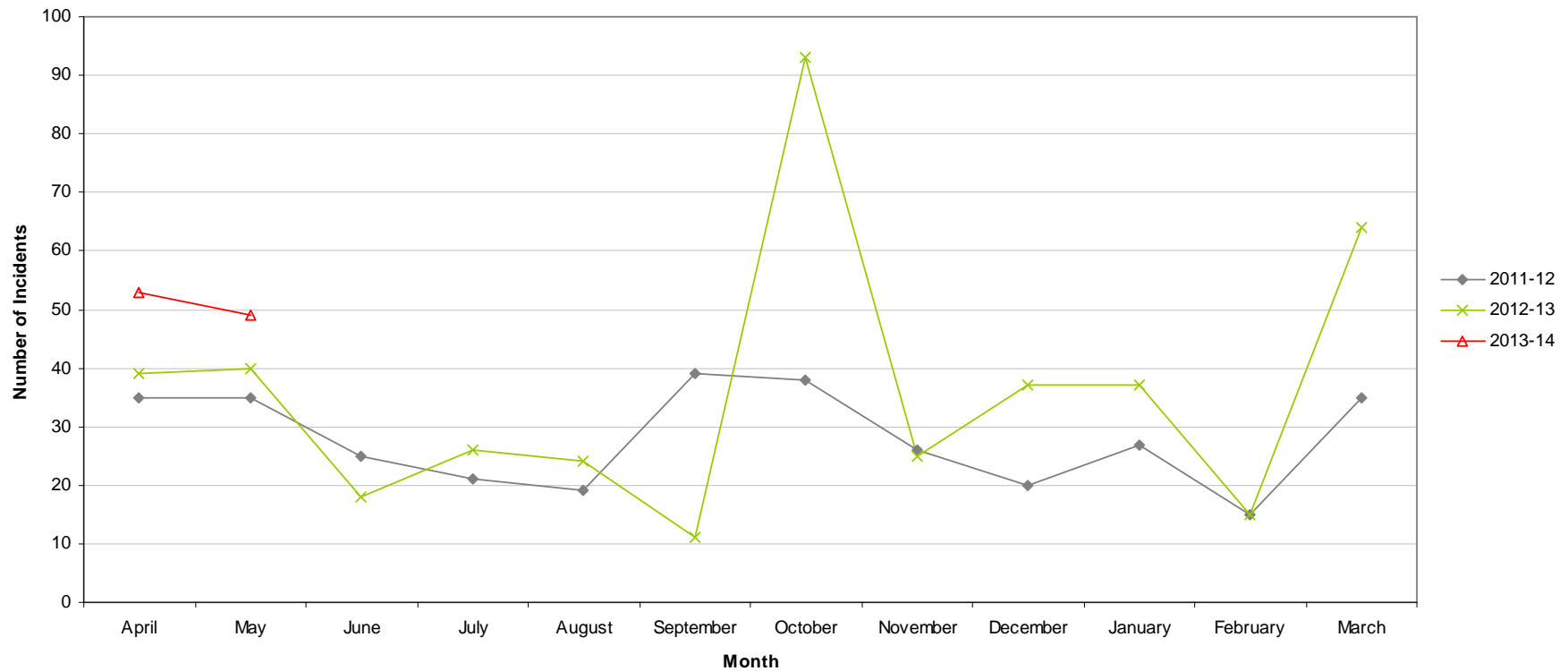


# Fly Tipping

<b>RED</b>	<b>49 incidents</b>	<b>Increase of 9</b>
<b>AMBER</b>		
<b>GREEN</b>		

- All data refers to a comparison with the previous year's month
- It is proposed that performance over time graphs be used for each indicator
- Historic data for comparison is not available for dog fouling

Incidents of Fly Tipping - Mapperley

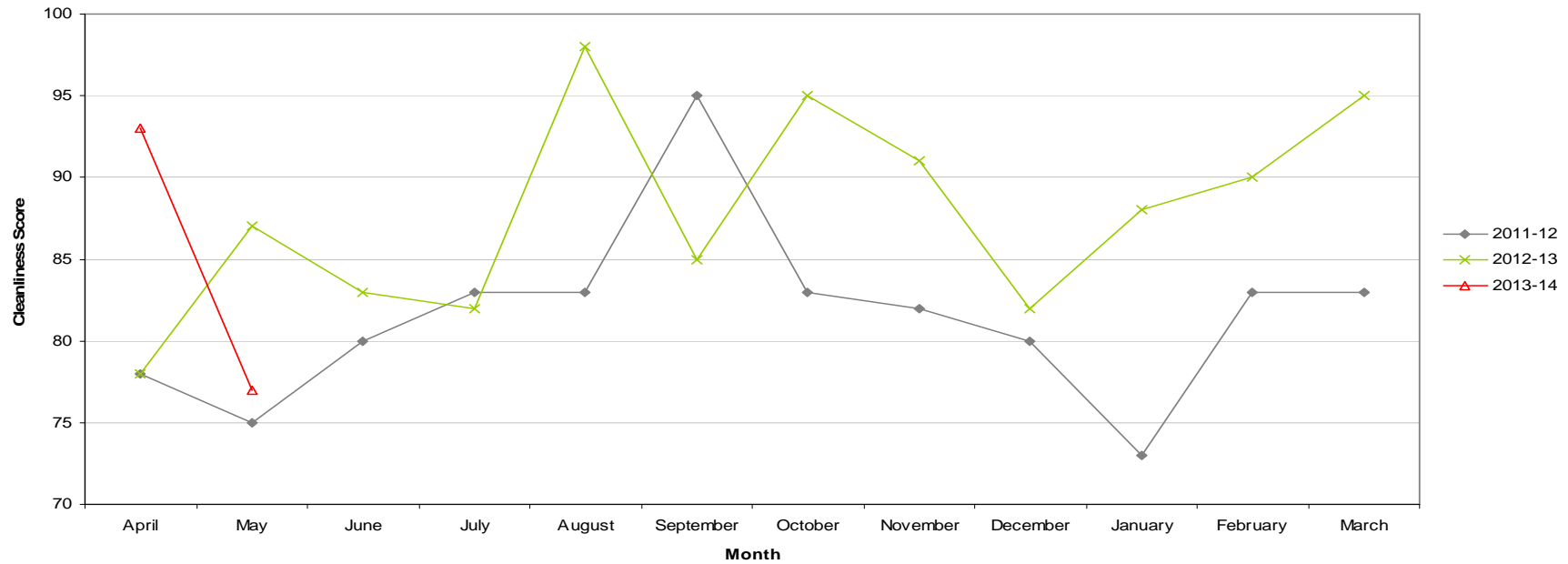


# Cleanliness Index

Cleanliness Index Score	<b>77</b>
Performance compared to previous year	↓
Performance compared to neighbourhoods target of 86	↓

- All data refers to a comparison with the previous year's month
- It is proposed that performance over time graphs be used for each indicator
- Historic data for comparison is not available for dog fouling

Cleanliness Index - Mapperley





# Unemployment Rate

Area	May-13			Change in last month		Change in last year	
	Number	Rate	City Rank	Number	%	Number	%
Arboretum	838	7.1	7	-21	-2.4	-13	-1.5
Aspley	1,204	10.6	1	-18	-1.5	-18	-1.5
Basford	722	6.5	9	-18	-2.4	-24	-3.2
Berridge	1,041	7.1	7	-40	-3.7	-52	-4.8
Bestwood	1,010	8.9	4	-22	-2.1	-26	-2.5
Bilborough	774	7.4	6	-35	-4.3	-30	-3.7
Bridge	670	6.4	10	2	0.3	-100	-13
Bulwell	1,076	9.9	2	-46	-4.1	16	1.5
Bulwell Forest	443	4.9	14	-3	-0.7	-23	-4.9
Clifton North	414	4.7	16	-13	-3	5	1.2
Clifton South	498	5.7	12	-17	-3.3	-28	-5.3
Dales	878	7.5	5	-40	-4.4	-21	-2.3
Dunkirk and Lenton	229	2.1	19	-7	-3	-42	-15.5
Leen Valley	333	4.8	15	-10	-2.9	-16	-4.6
Mapperley	692	6.2	11	-12	-1.7	-73	-9.5
Radford and Park	760	4	17	-19	-2.4	-33	-4.2
Sherwood	546	5.1	13	-38	-6.5	-67	-10.9
St Ann's	1,259	9.1	3	-22	-1.7	-5	-0.4
Wollaton East and Lenton Abbey	150	1.5	20	-3	-2	4	2.7
Wollaton West	230	2.5	18	-5	-2.1	-14	-5.7

*This is an edited version of a report produced by: Geoff Oxendale, Information and Research Officer, Nottingham City Council. Claimant count of Job Seekers Allowance (JSA) is used as a proxy measure for unemployment.*

*Wards are ranked from 1 (highest Rate, per 1000 of population, of JSA claimants) to 20 (lowest Rate).*

# Housing

## Mapperley Ward - Housing



### Anti-social behaviour – St Anns (Mapperley Ward)

Indicator	Current Target	2010/11	2011/12	2012/13		
		Value	Value	Value	Status	Trend
% of ASB cases resolved - St Anns	97.6%	100%	97.41%	99.03%		
% of ASB cases resolved by first intervention - St Anns	75%	-	-	81.97%		n/a

### Empty properties - Mapperley Ward



Indicator	Current Target	2010/11	2011/12	2012/13		
		Value	Value	Value	Status	Trend
Average void re-let time for Mapperley Ward (calendar days)	26	26.54	19.67	25.05		
Number of lettable voids Mapperley Ward	-	2	3	3		
Number of empty properties awaiting decommission in Mapperley Ward	-	125	2	2		

### Estate star ratings (from Tenant Service Inspectors)







Indicator	2010/11		2011/12		2012/13		
	Value	Status	Value	Status	Value	Status	Trend
Estate star rating - Mapperley	3 Star		3 Star		3 Star		

# Housing

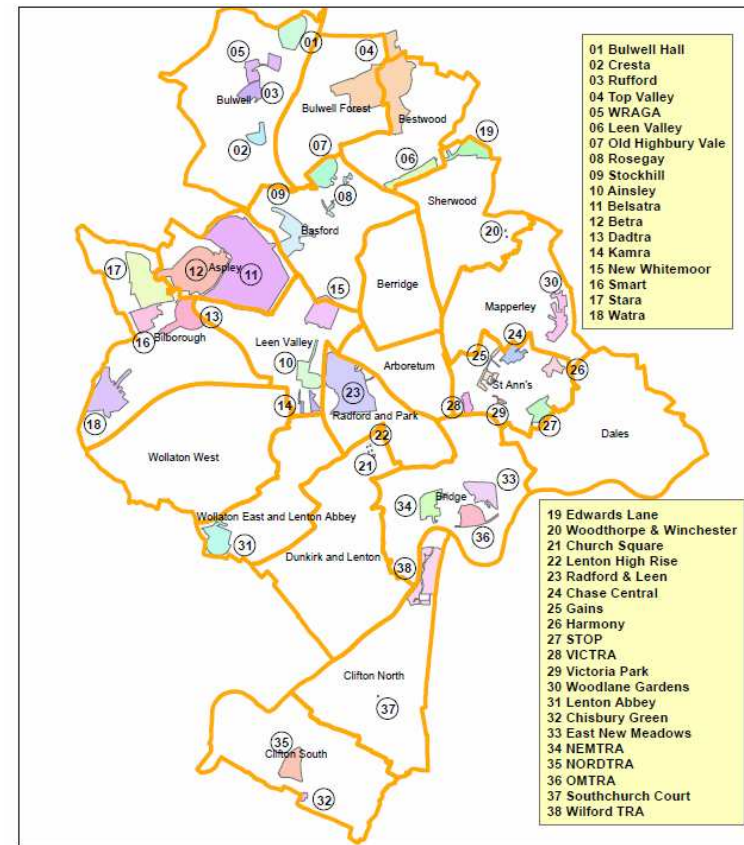
## Rent Collection – St Anns

Indicator	Current Target	2010/11	2011/12	2012/13		
		Value	Value	Value	Status	Trend
Rent charged that has been collected - St Anns	100.2%	100.3%	101.4%	100%		

### Key:

-  Performance on or exceeding target
-  Performance below target
-  Data only performance indicator
-  Performance has improved compared to two years ago
-  Performance has deteriorated compared to two years ago
-  Performance unchanged

**Map of Tenants and Residents Associations by Ward**



Data prepared by Nottingham City Homes Performance Team

For more information please contact Tricia Quinn, Performance Review Manager on 0115 9157365 or Marcus Parton, Performance Review Officer 0115 915715

# Housing

## Performance indicator definitions

Performance indicator	Definition
% of ASB cases resolved	This performance indicator monitors the proportion of ASB cases that Nottingham City Homes has successfully resolved. Data for this indicator is not available by ward and is reported by Housing Office.
% of ASB cases resolved by first intervention	This performance indicator monitors how many ASB cases Nottingham City Homes resolved on the first intervention e.g. written warning. Data for this indicator is not available by ward and is reported by Housing Office.
Average void re-let time (calendar days)	This performance indicator monitors how many empty properties Nottingham City Homes has re-let and the length of time it has taken. The void period is the number of calendar days including the day after the old tenancy ends right through to and including the day before the new tenancy starts.
Number of lettable voids	This performance indicator monitors the number of empty properties which are available for re-letting. Lettable empty properties are those which will receive repair work and then be let to a new tenant.
Number of empty properties awaiting decommission	This performance indicator monitors the number of empty properties which will not be re-let and includes those being decommissioned and / or demolished.
Estate star ratings	Nottingham City Homes Tenant Inspectors monitor the condition of estates and rates them according to a zero, one, two and three star standard. The estates are monitored every three months with a selection of streets (determined by tenants) covering all 42 estates.
Rent charged that has been collected	This performance indicator measures the amount of rent collected (including tenant arrears) as a percentage of rent due for the current year. Data for this indicator is not available by ward and is reported by Housing Office.

# Community Protection

*Data has been received from Community Protection and where postcodes have been listed these have been geo-coded and mapped to determine the Ward. All addresses relate to the address of the Perpetrator.*

*FPNs are not currently available at ward level.*

**In June 2013 the following orders were issued:**

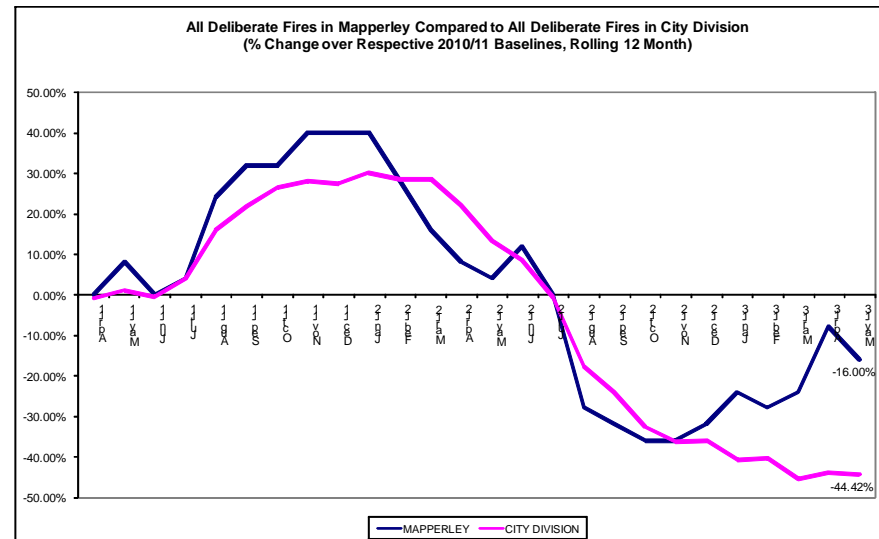
- **1 Statutory Notice for Environmental Issues**
- **Assisted RSL or Private Landlord to obtain a possession order for Drugs**

*For enquiries regarding Community Protection court outcomes please contact the Operational Manager for the locality.*

# Fire

Table: Volume of Deliberate Primary and Secondary Fires by Ward

Ward	May-12	May-13	Change	% Change	Previous YTD	YTD	Change	% Change
Arboretum	1	1	0	0.00%	1	4	3	300.00%
Aspley	6	5	-1	-16.67%	7	11	4	57.14%
Basford	3	3	0	0.00%	11	5	-6	-54.55%
Berridge	6	4	-2	-33.33%	8	8	0	0.00%
Bestwood	3	6	3	100.00%	9	14	5	55.56%
Bilborough	9	1	-8	-88.89%	19	3	-16	-84.21%
Bridge	1	3	2	200.00%	2	5	3	150.00%
Bulwell	6	10	4	66.67%	15	14	-1	-6.67%
Bulwell Forest	3	1	-2	-66.67%	6	4	-2	-33.33%
Clifton North	1	1	0	0.00%	2	4	2	100.00%
Clifton South	3	4	1	33.33%	3	8	5	166.67%
Dales	1	1	0	0.00%	1	5	4	400.00%
Dunkirk and Lenton	0	0	0		0	1	1	
Leen Valley	3	1	-2	-66.67%	7	7	0	0.00%
Mapperley	3	1	-2	-66.67%	3	5	2	66.67%
Radford and Park	1	1	0	0.00%	2	1	-1	-50.00%
Sherwood	1	0	-1	-100.00%	1	0	-1	-100.00%
St. Ann's	3	4	1	33.33%	5	11	6	120.00%
Wollaton East and Lenton Abbey	0	1	1		1	2	1	100.00%
Wollaton West	0	0	0		0	2	2	
<b>Total</b>	<b>54</b>	<b>48</b>	<b>-6</b>	<b>-11.11%</b>	<b>103</b>	<b>114</b>	<b>11</b>	<b>10.68%</b>



- The above table shows volume of deliberate (primary and secondary) fires in the 20 wards. In May 2013 there was one fire in Mapperley. This involved a secondary refuse fire in a refuse container. Year to date (compared to the corresponding period last year) fires in the ward have increased from 3 to five.
- The graph on the right shows a *rolling* 12 month total of deliberate fires in Mapperley against the *fixed* 2010/11 baseline. The performance of the City Division against *its* baseline has also been shown for comparison purposes.

# Methodology

Data has not been audited or verified and therefore must only be used as a reflection of crime.

Crime data and ASB calls have been extracted from the Police systems and mapped to ascertain which Ward they occurred in.

Where a ward boundary overlaps with the City Centre, crime data and ASB calls relating to the City Centre have been removed.

Where possible the most recent data is used, although for some areas this may be a month further in arrears.

Discussions continue with other agencies regarding what further data can be included.